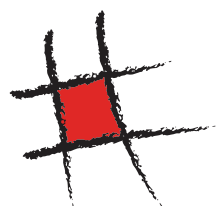
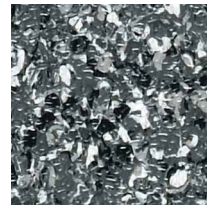


GTI MAX

THE BEST HEAVY TRAFFIC FLOORING SOLUTION



REDISCOVER THE GTI MAX RANGE FOR AN EASY AND LONGLASTING RENOVATION



0249 - Carbon



0265 - Maestrale



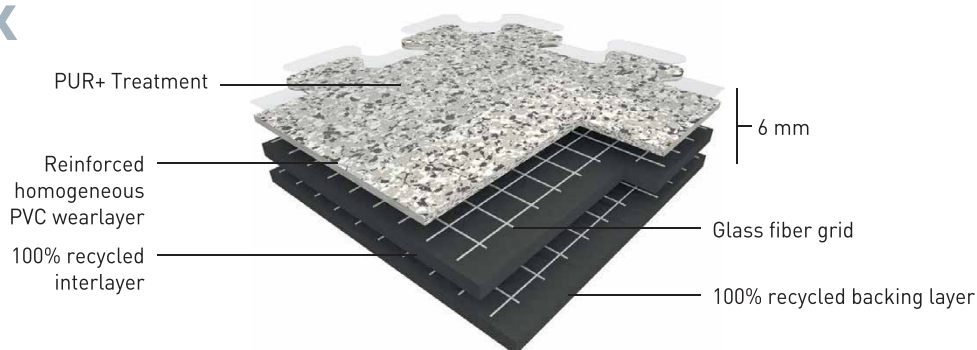
0267 - Levante



0253 - Aluminium

0253 - Aluminium

GTI MAX



GTI MAX CONNECT is a multi-layered interlocking loose lay vinyl tile with polyurethane treatment (PUR+), 6 mm thick with a dovetail joint, abrasion group T. It is manufactured by GERFLOR for TekSol using a continuous and exclusive high pressure process.

The **GTI MAX** wear layer is reinforced by specific along fillers that offers an outstanding resistance to traffic.

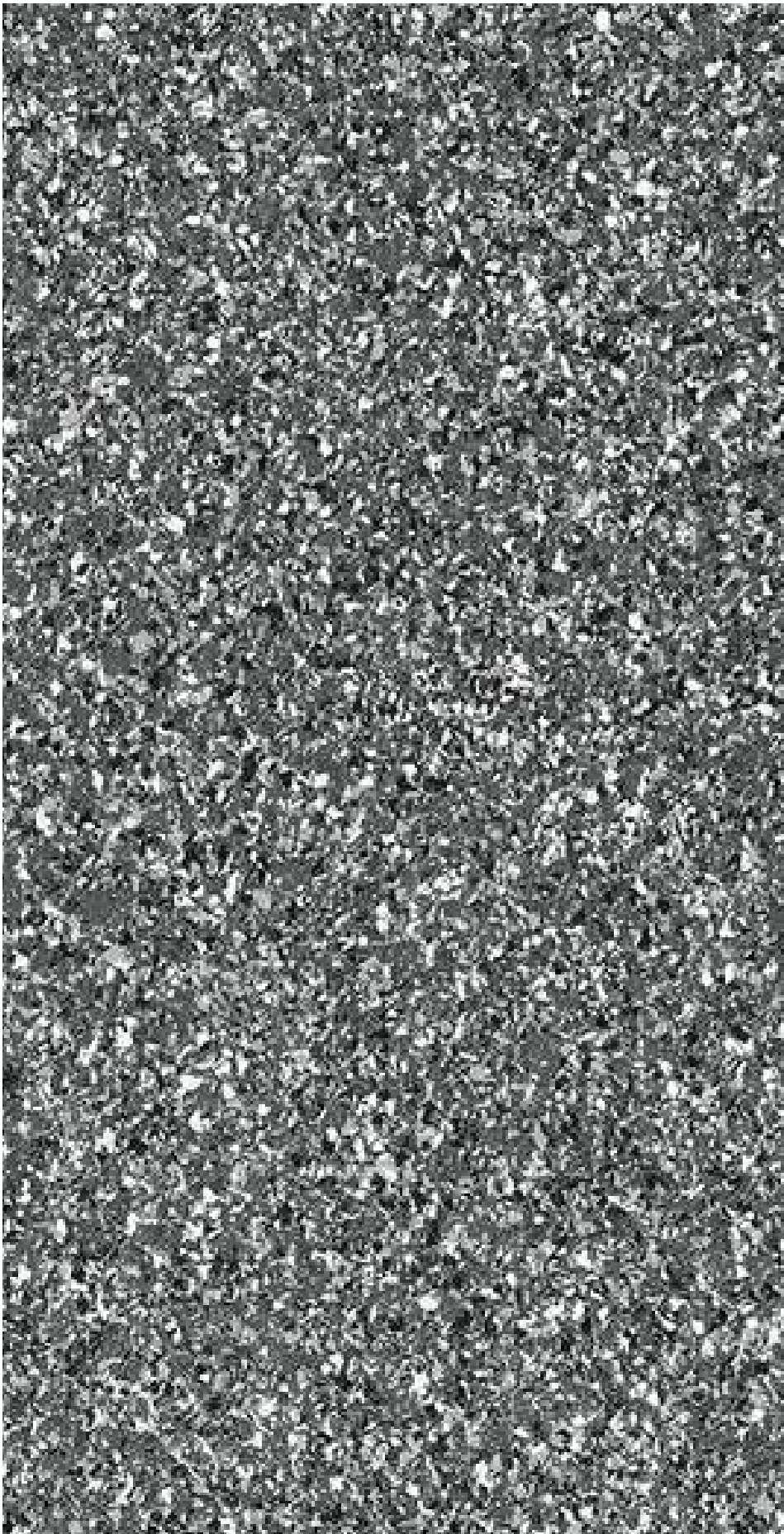
GTI MAX is reinforced with 2 glass fiber grids on either side of an intermediate pressed homogeneous layer. GTI' s backing is a 4 mm thick black pressed homogeneous sheet, its surface is a colored and reinforced homogeneous sheet 2 mm thick. It is made of 100% recyclable and made with up to 80% recycled content.

GTI MAX

- ▶ Resistant to heavy traffic
- ▶ Fast renovation: can be installed over existing floorcovering
- ▶ No subfloor preparation, no adhesive and no production stoppage [no loss of revenue]
- ▶ Polyurethane surface treatment PUR+ for ease of maintenance
- ▶ 6 Standard logos: Mix and match colours to create corners and walkways

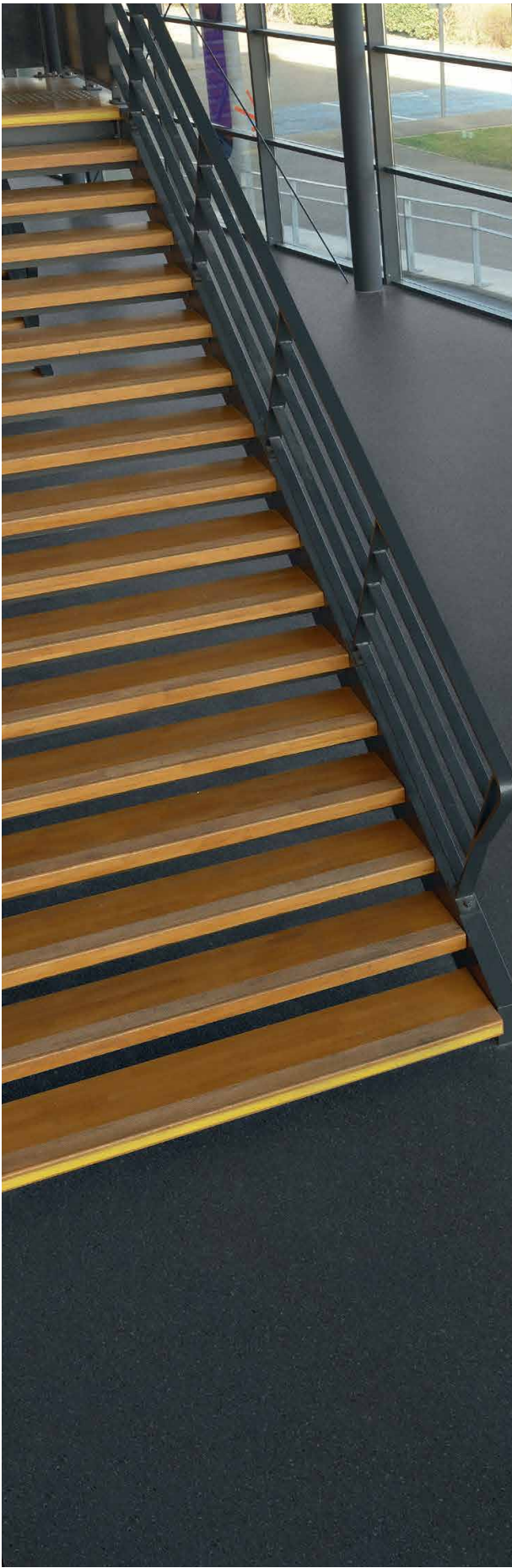
GTI MAX

Concrete emboss / 635 x 635 mm
Grain béton | 25" x 25"



GTI MAX

Concrete emboss / 635 x 635 mm
Grain béton 25" x 25"



GTI MAX

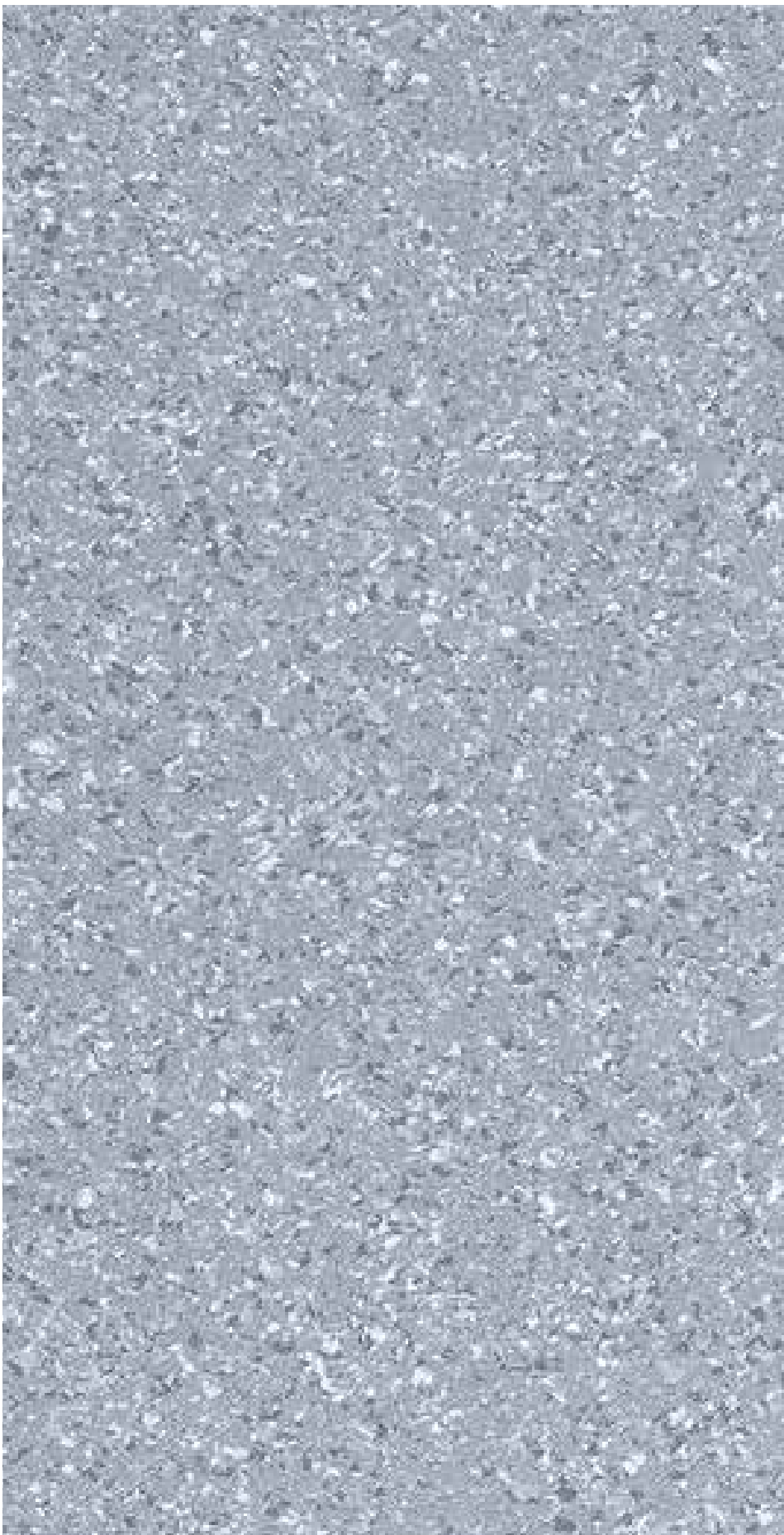
Concrete emboss / 635 x 635 mm
Grain béton | 25" x 25"



0267 - Levante

GTI MAX

Concrete emboss / 635 x 635 mm
Grain béton 25" x 25"



0253 - Aluminium



LESS ADHESIVE MORE RECYCLING



COMPOSITION

- 100% REACH compliant
- FREE of formaldehyde
- FREE of heavy metals
- FREE of solvent



RECYCLED CONTENT

- 80% recycled content
- 100% REACH compliant recycled content



LIFE CYCLE ANALYSIS

- Eco-designed according to a product specific Life Cycle Analysis
- Product specific EPD (Environmental Products Declaration) available
- Manufactured in an ISO 14001 and ISO 50001 certified site
- Contribution to many Green Building Schemes (LEED, HQE, BREEAM...)



RECYCLING

- 100% recyclable product



INSTALLATION

- Adhesive free installation



INDOOR AIR QUALITY

- TVOC emissions 10 times better than norm requirements (TVOC < 100 µg/m³ after 28 days)
- Floorscore® certified
- M1 certified
- Comply with AgBB protocol
- No formaldehyde emission

TRIAL BY EXPERIENCE



THE HOTEL AND HOSPITALITY SECTOR



The installation of our new flooring has breathed fresh life into this area of high pedestrian traffic. It is light and easy to maintain - we love it!

Blaine, USA - 200 m² of GTI Max

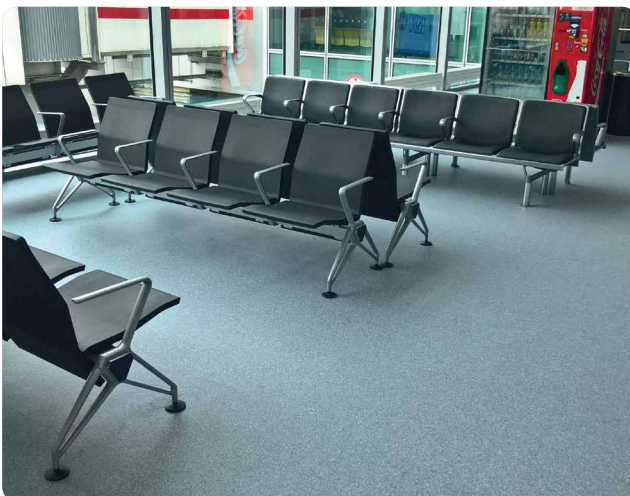
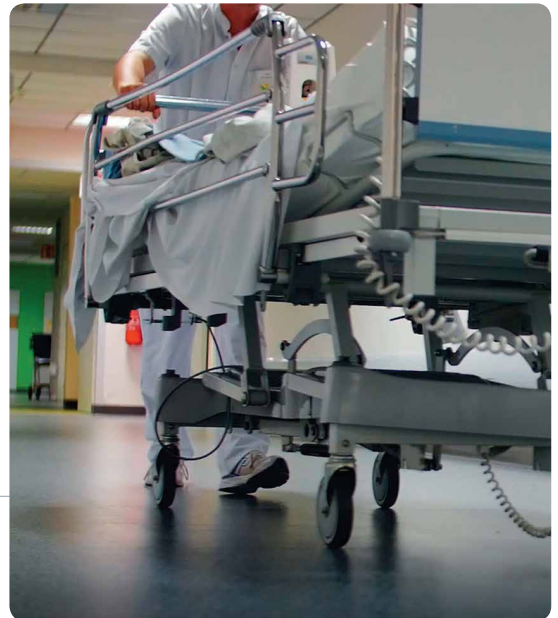


HEALTHCARE - DRÔME HOSPITAL



We had to renew the floor coverings in the two main passageways of the hospital, without closing off access to areas that are submitted to heavy pedestrian and logistics traffic. GTI flooring was the natural and obvious choice.

Romans, France
300 m² of GTI Max



HEATHROW AIRPORT TERMINAL 3



The GTI Max tiling perfectly fulfilled all of our selection criteria:

- To keep pedestrian and machinery routes open throughout its installation
- To allow existing furniture to remain in place
- To minimise any weight addition to the airport structure

Heathrow, England
4000 m² of GTI Max



CONCRETE EMBOSSING



SLIP RESISTANCE **R10 RATED**

HSE 36 COMPLIANT

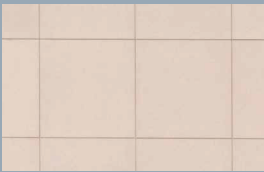
4 COLOURS

HEAVY TRAFFIC **RESISTANCE!**



- Dynamic Load: up to 6000 kg*
- Static load: up to 50 kg/cm²

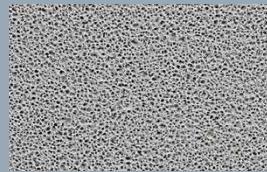
INSTALLATION ON **ANY TYPE OF SURFACE**



TILES



CONCRETE



RESIN



WET SURFACES
- up to 7% humidity / 92% RH



ASBESTOS SURFACES



NO NEED TO **STOP WORK**

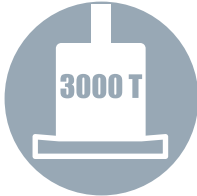


- Fast looselay installation allowing the area to remain open
- Clean installation - no adhesive or dust
- A 2 person team can install up to 200m² in 8 hours

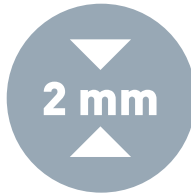
* Refer to installation guidelines

GTI MAX

HARD-WEARING



- Tiles triple pressed at over **3000 T**



- **2mm** wear layer



- PUR+ surface treatment enabling **easy maintenance**

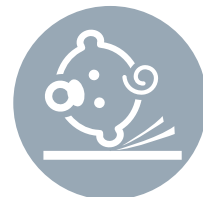
USER COMFORT & SAFETY



- **19 dB** less noise than tiling when users walk on it
- Underfoot comfort: **reduces fatigue**



- More slip-resistant than other types of surface (**R10 rated**)

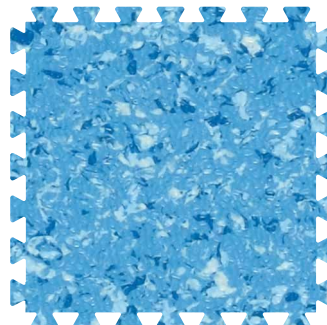


- **4 x less hazardous** than tiling in the head impact assessment (Standard 1177: head impact - 66 cm vs. 10 cm)



DESIGNS & LAYOUT

- Easy to install: modular tile format
- 23 colours to create zoning & corners



635 x 635 mm

GTI MAX



* Information sur le niveau d'émission de substances volatiles dans l'air intérieur, présentant un risque de toxicité par inhalation, sur une échelle de classe allant de A+ (très faibles émissions) à C (fortes émissions)

DESCRIPTION			GTI MAX CONCRETE EMOSS
PRODUCT DESCRIPTION			
Total thickness	ASTM F386-02	mm	6
Wearlayer thickness	-	mm	2
Weight	EN 430	g/sq.m	9365
Tile size	GTI Connect	mm	635 x 635
CLASSIFICATION			
Norm / product specification	-	-	ISO 10582
European classification	EN ISO 10874	Class	34-43
Fire rating	EN 13 501-1	Class	Bfl-s1
Static electrical propensity	EN 1815	kV	≤ 2
Slip resistance wet: ramp test with oil	DIN 51 130	Class	R10
Pendulum test	BS 7976	-	HSE 36 compliant ^{t(2)}
PERFORMANCE			
Wear resistance	EN 660.2	mm ³	≤ 2.0
Wear group	-	-	T
Type binder content	ISO 10582	type	I
Dimensional stability	EN ISO 23999	%	≤ 0.15
Residual indentation	EN ISO 24343-1	mm	≤ 0.10
Castor chair test (type w)	ISO 4918	-	OK
Shore hardness	EN ISO 868	HD	≥ 55
Shifting resistance	CSTB 3562	N/mm ²	≥ 30
Thermal conductivity	EN ISO 10456	W/(m.K)	0.25
Colour fastness	EN 20 105 - B02	Degree	≥ 6
Surface treatment	-	-	PUR+
Chemical products resistance	EN ISO 26987	-	OK
ENVIRONMENT / INDOOR AIR QUALITY			
TVOC after 28 days	ISO 16000-6	µg / m ³	< 100
Certification	-	-	Floorscore®
CE MARKING			
CE		EN 14041	

* The implementation of an effective cleaning method is the best defense against infection.

GTI MAX: LESS ADHESIVE, MORE RECYCLING

COMPOSITION
100% REACH

INSTALLATION
Adhesive free
installation

INDOOR
AIR QUALITY
TVOC emissions 10 times better
than norms requirements
(TVOC <100 µg/m³ after 28 days)

RECYCLED
CONTENT
80%

RECYCLABILITY
100%
recyclable product

LCA
Eco-designed
according to a product
specific Life Cycle
Analysis

Manufactured for **TekSol** by **Gerflor** in France

